

Waterfall Pump 1650 / 2300

Operating instructions
Notice d'emploi
Instrucciones de uso



REMINDER

CALL 1-866-627-3433
BEFORE RETURNING TO STORE

Part	Description	QTY
A	Pump	1
B	1 in. and 1½ in. ID tubing adapter	1


Information about these operating instructions


Welcome to GASE Liquid Water. You made a great choice with the purchase of this product **Waterfall Pump 1650 / 300**. Prior to operating the unit, please read the instructions of use carefully and fully familiarize yourself with the unit. Ensure that all work on and with this unit is only carried out in accordance with these instructions. Please strictly follow the enclosed instructions to ensure safe and correct handling of the product. Keep these instructions in a safe place. Please also hand over the instructions when passing the unit onto a new owner.

WARNINGS AND CAUTIONS SYMBOLS


Symbols used in these instructions

The symbols used in this operating manual have the following meanings:

 Risk of injury to persons due to dangerous electrical voltage.
This symbol indicates an imminent danger, which can lead to death or severe injuries if the appropriate measures are not taken.

 Risk of personal injury caused by a general source of danger.
This symbol indicates an imminent danger, which can lead to death or severe injuries if the appropriate measures are not taken.



 Important information for trouble-free operation.

Intended use

following:

- Operation under observance of the technical data.
- The following restrictions apply to the unit:
- Do not use in swimming pools.
 - CAUTION - this pump has been evaluated for use with water only.
 - Never run the unit without water.
 - Do not use for commercial or industrial purposes.
 - Do not connect to the domestic water supply.
 - Inspect the power cord for damage before installation and maintenance.
 - Do not remove the grounding pin from the power cord plug.

Use other than that intended

This unit can be dangerous and cause harm if not used in accordance with these instructions. Any use not in accordance

Questions, problems, missing parts?

Before returning to your retailer, call us at 1-866-627-3435, 8 a.m.-6 p.m., EST, Monday-Friday, or email us at customer@oase-livingwater.com. Or visit our website at www.oase-livingwater.com

Maintenance and cleaning

⚠ Attention! Dangerous electrical voltage.
Possible consequences: Death or serious injuries.

Protective measures:

- Electrical units and installations with a rated voltage of $U > 12 \text{ V AC}$ or $U > 30 \text{ V DC}$ located in the water: Isolate the
- Isolate the unit before starting any work.
- Secure the unit to prevent unintentional switching on.

⚠ WARNING

This pump uses a very strong magnet to achieve superior performance. When removing the impeller assembly there will be a strong magnetic force pulling the assembly into the pump to potentially the impeller assembly.

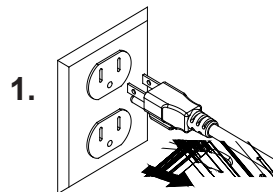
Cleaning the unit

upon the environment in which it is operated. Clean the pump when it is visibly soiled or when a drop in performance is detected. Clean the unit with warm water using a soft brush.

- Never use aggressive cleaning agents or chemical solutions. These could attack the housing surface or impair the function.
- household cleaner free from vinegar and chlorine can be used. Subsequently, clean the pump thoroughly using warm water.

Cleaning the pump

1. Disconnect the pump from the power source
 2. Disassemble the screen and remove the impeller
 3. Remove the impeller assembly by pulling on the back round plate behind the impeller
 4. Use a soft cloth or brush to clean the impeller assembly and the inside of the impeller housing.
- Check parts for damages such as cracked rotor, shaft, or bearing, cracks in the magnet, and broken plastics. Replace parts if necessary.
5. Reassemble in the reverse order.



3.

4.

Questions, problems, missing parts?

Before returning to your retailer, call us at 1-866-627-3435, 8 a.m.-6 p.m., EST, Monday-Friday, or email us at customer-care@oase-livingwater.com. Or visit our website at www.oase-livingwater.com

Storage/Winterization

Wear parts

Disposal



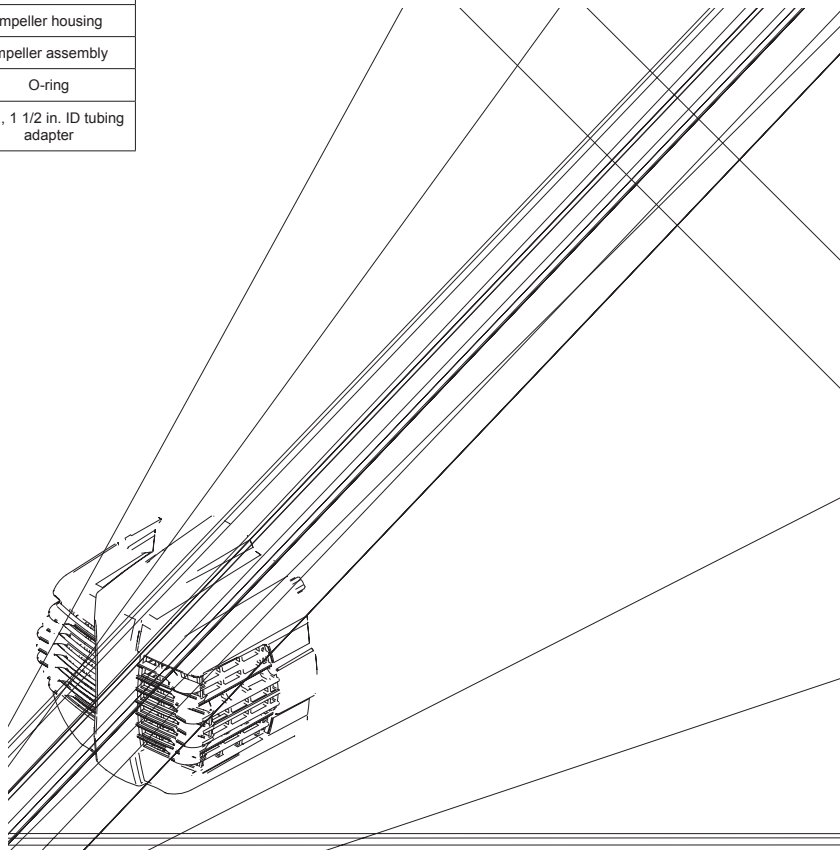
Do not dispose of this unit with domestic waste! Disable the unit beforehand by cutting off the cables. Further information about the recycling of this product can be obtained from your local municipal authority.

Troubleshooting

Issue	Cause	Solution
The unit is not performing its suction function	Power supply not connected	Connect pump power supply, check the supply lines to make sure the voltage is correct
	Impeller blocked, shaft broken	Remove the inlet screen and/or pump cover, and impeller is not broken or jammed by debris. Also check to make sure that the ceramic shaft or bearings are not broken.
	Pump is not completely submerged	Completely submerge pump in the water
	Pump is not completely submerged	Completely submerge pump in the water
	Screen clogged	Clean
	Tubing blocked	Clean or replace tubing
	Tubing kinked	Eliminate kink, replace tubing if it is damaged
	tubing due to friction	Reduce tubing length to reduce frictional loss Select larger hose diameter, adapt stepped hose adapter to hose diameter.
	automatically stopped to protect the pump.	Clean the pump housing and impeller assembly
	Impeller worn	Replace impeller assembly
Unit switches off after a short running period		Clean impeller housing, bearing and impeller assembly
	Impeller blocked, shaft broken	Remove the inlet screen and/or pump cover, and impeller is not broken or jammed by debris. Also check to make sure that the ceramic shaft or bearings are not broken.
	Water temperature too high	

Waterfall Pump	Model	Model No.	Rated voltage	Power consumption		height	Cord length	Connection for hoses	Dimensions
	1650	45421	120V / 60 Hz	75 W / 1 A	1650 GPH	16.5 ft.	20 ft.	1", 1 1/2"	8.4 x 5 x 6.23 in.
2300	45422	130 W / 1.5 A		2300 GPH	20 ft.				

Pos.	Waterfall Pump	
	1650	2300
1	Screen	
2	Impeller housing	
3	Impeller assembly	
4	O-ring	
5	1 in., 1 1/2 in. ID tubing adapter	



Questions, problems, missing parts?

Before returning to your retailer, call us at 1-866-627-3435, 8 a.m.-6 p.m., EST, Monday-Friday, or email us at customer-care@oase-livingwater.com. Or visit our website at www.oase-livingwater.com

